



*A Healthy Investment, Guaranteed*



*the ergonomic seating  
specialists*



*5'1"  
105 lbs*



*6'4"  
230 lbs*





5'7"  
195 lbs

6'  
190 lbs

At ergoCentric Seating Systems, our sole mission and focus is to design and manufacture the best ergonomic chairs in the world. Working closely with ergonomists and health practitioners to continuously improve and refine our chair designs, ergoCentric Seating Systems offers a wide range of aesthetically pleasing task, executive, guest and stackable seating for the office environment.

Our industrial and hi tech seating meet the specialized requirements of factory, laboratory, cleanroom and ESD settings.

We are your ergonomic seating specialists!



*comfort, health  
and productivity*



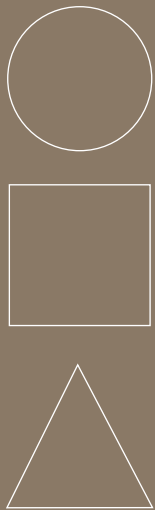
The human body was not made for sitting. Lack of proper support while seated adds stress to the body, which over a period of time, can lead to muscle fatigue, circulatory problems and even spinal injuries. A proper ergonomic chair provides the support so essential to your health and the comfort you need to be productive.

Recommended by ergonomists and health care practitioners to reduce stresses caused by the seated posture, ergoCentric is the first company to have its chairs recognized by the Canadian Physiotherapy Association.



*seating for your increasingly  
diverse workforce*





Our workforce is changing. Immigration, an aging population, the need to accommodate disabilities and an increase in sizes make it impossible for one chair, no matter how adjustable, to fit every person.

ergoCentric seating systems are ergonomically designed to accommodate 100 percent of your diverse workforce. In addition to making the most adjustable chairs on the market, modularity is a key component of our business model.

An elderly man with a white beard and hair is sitting in a green ergonomic office chair. He is wearing a light-colored, long-sleeved button-down shirt, dark trousers, and black shoes. The chair has a high backrest, armrests, and a five-point base with casters. The background consists of white vertical blinds.

*modular design  
for the perfect fit*

A modular approach allows ergoCentric chairs to fit virtually every person while they work. Seats, backs, arms, bases and cylinders can be easily interchanged at anytime, making it easy and inexpensive to repair or reconfigure chairs to suit changing needs. Components can also be modified to accommodate people with special needs.



# accommodating diversity

Accommodating most of your workforce is not enough. At ergoCentric, we're committed to fitting each and every one of your employees.

## Back Sizes and Design

- Optional back sizes can be easily interchanged to accommodate a wide range of users.
- Back structure includes a lateral curve to stabilize the upper body and a forward curve to help naturally position the lumbar spine.



## Seat Sizes and Design

- Optional seat sizes provide a comfortable fit for a variety of users.
- A waterfall front edge reduces pressure on the veins and improves circulation.
- Contoured sides help redistribute the user's weight to minimize pressure on the seat bones and legs.



## Seat Height Ranges

- Available pneumatic cylinders easily accommodate a wide range of lower leg lengths and work height requirements while allowing the chair to swivel for easy reach of work items.



## Arm Options

- Arms and arm caps can be reconfigured to provide over 50 modular options for changes in job functions, employees or physical requirements.



## Footrests and Footrings

- An adjustable footring or footrest for higher seat height requirements ensures stress is not placed on the veins in the back of the thighs and avoids potential circulation problems.



## Serial Numbers

- For fast and easy reference, our database tracks all chair specifications and customer information by serial number. This system makes reordering chairs easy and allows us to make repairs or modifications in one visit.



## Our typical customizations:

1. Shorten and/or reduce the width of our five seat sizes.
2. Shorten and/or reduce the width of our backs.
3. Add foam to modify the shape or softness of our seats and backs.
4. Cut out the back center of our seats to remove pressure from the base of the spine.
5. Install single curve backrests to accommodate individuals with scoliosis, spinal fusions and other conditions that do not benefit from lumbar support.
6. Modify the size of upholstered arm caps to accommodate individual needs.
7. Lower our standard arm height adjustment range by 1".
8. Increase the size or softness of our neck support on our extra high back chair.
9. Reposition the armrest forward or backward on the seat.
10. Provide left hand mechanisms.



*the most adjustable  
chairs on the market*

Our patented chair designs provide the widest range of adjustability and can be customized for support and for changing individual needs.

Full adjustability means that our chairs are as dynamic as the human bodies they were designed for. Using sound ergonomic principles, ergoCentric continues to design the most adjustable chairs for today's work environments.

With the most adjustable chairs on the market, ergoCentric chairs fit more people than any other chair available today. Many of our adjustment features are unique to ergoCentric and were created in response to our customers' needs.



#### Back Height System

- Easy to reach from the seated position, the patented back height adjustment mechanism is spring loaded to provide effortless support adjustment.
- Five inches of infinite adjustment provides the widest range of adjustability available on any chair.



#### Back Angle

- Back angle adjustment allows the backrest angle to be more than 90 degrees in relation to the seat to help return the natural curve to the lumbar spine.



#### Seat Height

- A wide range in optional pneumatic cylinders easily accommodates a variety of lower leg lengths and work height requirements while allowing the chair to swivel for easy reach of work items.



#### Seat Angle

- Seat angle adjustment tilts the seat pan forward and backward providing a maximum range in postures to change pressure points on the seat and relieve pressure on the veins.



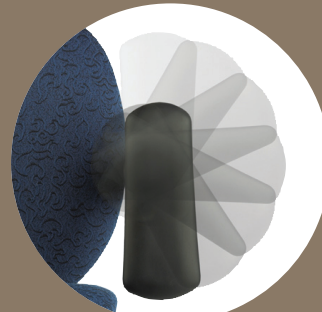
#### Air Lumbar & Air Thoracic Systems

- Air Lumbar and Air Thoracic options are available providing adjustable pressure for exact lateral and lumbar support.
- Utilizing our patented air pump design, two pumps located on the back rest allow the user to adjust the lumbar support and thoracic support independently.



#### Seat Depth & Tension Adjustments

- Seat slider provides two and a half inches of seat depth adjustment range to meet multiple user requirements.
- Tilt tension adjusts the spring tension of the chair to match the user's body weight for easy movement.



#### Adjustable Arms

- Available arm options have two inches of width and four inches of height adjustment for multiple user requirements.
- Patented swivel arms rotate to accommodate multiple work angles and provide full forearm support for all keyboard and mouse tasks.



#### Adjustable Headrest

- Patented headrest has three pivot points with seven inch vertical and horizontal adjustments to provide maximum adjustability.
- Cast aluminum design and pivot mechanisms ensure ongoing durability for a lifetime of adjustment support.

*adjustability  
understood*





The most important issue in the office furniture industry today is that most office workers do not know how to adjust their office chair. In fact, less than 10 percent of over 1000 office employees studied had complete knowledge of their workstation's ergonomic adjustments. Sixty-nine percent were experiencing discomfort. <sup>1</sup>

In a survey of members of the Association of Canadian Ergonomists (ACE), 94 percent agreed that most office workers do not know how to properly adjust their chair. Further, 100 percent agreed that an improperly adjusted chair has a negative effect on the user's health and productivity.<sup>2</sup>

At ergoCentric, we recognize these issues and that is why we strive not only to make our chairs easy to adjust, but we do everything we can to make adjustability understood.

<sup>1</sup> Product Knowledge and the Effect on Reducing Office Employee Discomfort (Grand Haven, MI: Atlas Ergonomics, 2006)

<sup>2</sup> ergoCentric Seating Systems Inc., unpublished research date, 2006

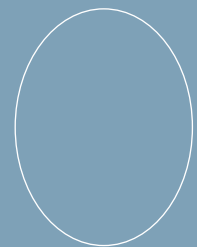
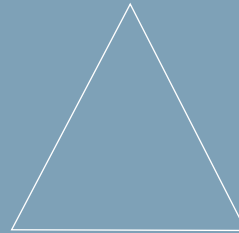
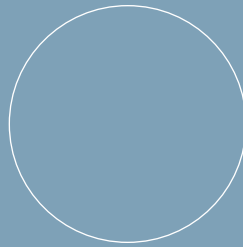
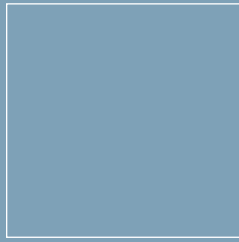


## *adjustability understood*

Office chairs should be adjusted throughout the day to provide the movement and variation of postures so important to the human body.

Studies show that most people do not understand how to use their chair adjustments or why it is important to do so. In fact, 45 percent of office workers don't even know how to adjust the back height of their office chair.<sup>1</sup>

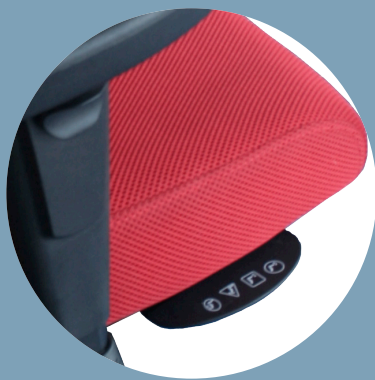
<sup>1</sup>If the Chair Fits (Zeeland, MI: Herman Miller Inc., 2001)



Understanding how to adjust your chair shouldn't be an intimidating task. We have taken the guess work out of chair adjustments. Our patented tools and technologies are easy to understand and provide adjustment information that is always available – right from your chair!

By using our adjustments, you ensure your body receives the support and movement it needs to comfortably perform tasks, optimize your health and increase your productivity.

If you need further information, our educational tools demonstrate chair adjustments and provide ergonomic advice. Understanding adjustability is a part of everything we do.



Unique to ergoCentric, easily-identified instruction icons represent adjustment paddle shapes and are clearly visible on an icon plate. The convenient location of these new icon plates provide a clearer view of the adjustment options as well as a visual reminder to adjust the chair and what paddles to use for each chair adjustment.



Geometric shaped adjustment paddles differentiate the chairs' adjustment controls helping users to instantly recognize an adjustment option by simply feeling the paddle's shape.



*quality and function*

A commitment to using the highest quality materials and finishes is reflected through the company's international ISO 9001 quality assurance designation. ergoCentric is also the first company to have its chairs recognized by the Canadian Physiotherapy Association.



# ISO 9001 | Quality Assurance Certification

Lumbar support is built into the dual curved hardwood plywood to provide the force required to reposition the lumbar spine back into its natural curve.



Premium pneumatic cylinder lifts are built to last.

Seats and backs are made using CFC free 2 1/4" fire retardant polyurethane foam to provide ongoing comfort and support.



30% glass reinforced nylon or solid polished aluminum for long-lasting support. Steel reinforced hub holds pneumatic cylinder securely in place.

Seat upholstery is fastened with dual continuous staple rows, which are concealed using a protective vinyl trim.



Caster and glide options provide optimal and safe chair movement across a variety of surfaces. Lock-on or lock-off casters are ideal for uneven surfaces, slippery tile floors or whenever stability is required.

Case-hardened machine screws with Scotchgrip™ thread lock and zinc plated T-nuts are used to fasten the control mechanism and arm brackets to the seat structure to ensure they will not loosen.



Every chair serial number is entered into our database system for easy tracking.

## testing

All ergoCentric seating is tested to meet or surpass North American quality standards as set by the Canadian General Standards Board (CGSB), the American National Standards Institute (ANSI) and the Business Institutional Furniture Manufacturers Association (BIFMA).

Testing is carried out by an independent certified testing facility.



## *fast delivery*

Whether your order is for a single chair or multiple seating products, our order process system ensures your high-quality products are delivered on time.

With a large selection of in-stock optional components, ergoCentric offers fast turnaround times to accommodate your business needs. Regular orders are processed and shipped between 1 to 10 business days. As well, every effort is made to fill special orders within our regular ship times.

## *service*

ergoCentric products are available to customers through a network of commercial dealers and area sales representatives. ergoCentric dealers offer specialized expertise in ergonomic seating with support from ergoCentric sales and marketing departments. Internal customer service personnel are also available to assist customers with product information.

Customer feedback is critical to helping us find new ways to improve our services and product designs. Our customer service and sales departments regularly survey our dealers and end-users to ensure we continue to meet their changing needs.

## *warranty*

### 10 YEARS

- Original Purchaser
- Up to a weight of 280 lbs

### 5 YEARS

- Plus Size seating up to a weight of 400 lbs
- Task Intensive seating for multi-shift workers up to 300 lbs
- Specialty Seating up to a weight of 280 lbs

Please visit our website at [www.ergocentric.com](http://www.ergocentric.com) for complete warranty details.



## *environment*

At ergoCentric, we believe that the preservation of the environment is a serious issue facing the furniture industry today.

As a producer of high-quality ergonomically-correct seating systems, ergoCentric's commitment to environmental protection is a natural outgrowth of our concerns for workplace health and safety. Accordingly, environmental initiatives are an integral part of our corporate culture.

ergoCentric management systems are designed to ensure the integration of all applicable governmental as well as internal environmental, health and safety requirements into our business processes. As a result we have earned the ISO 14001 international standard for environmental management systems.

In cooperation with our suppliers, customers and employees, we continually strive to achieve industry leadership by including refurbishing and recycling as formal design considerations and as a part of our business model.

Our build-to-order business model increases efficiency and eliminates waste by ensuring that each seating system produced has a buyer and that it is the right long term solution for that buyer.

The modular designs of ergoCentric chairs allow parts to be easily interchanged to meet user requirements long into the future, ensuring less waste goes to landfill sites. As well, water-based glues are used in upholstery processes protecting the environment and employees from harmful emissions.

As new technologies evolve, so will the way we do things. Environmental concerns will continue to influence what we do and how we do it.

*adjustability understood*



**ergoCentric**  
SEATING • SYSTEMS

T: 905.696.6800 / 866 GET ERGO® (438.3746)  
F: 905.696.0899 / 800.848.5190  
[ergocentric.com](http://ergocentric.com)

