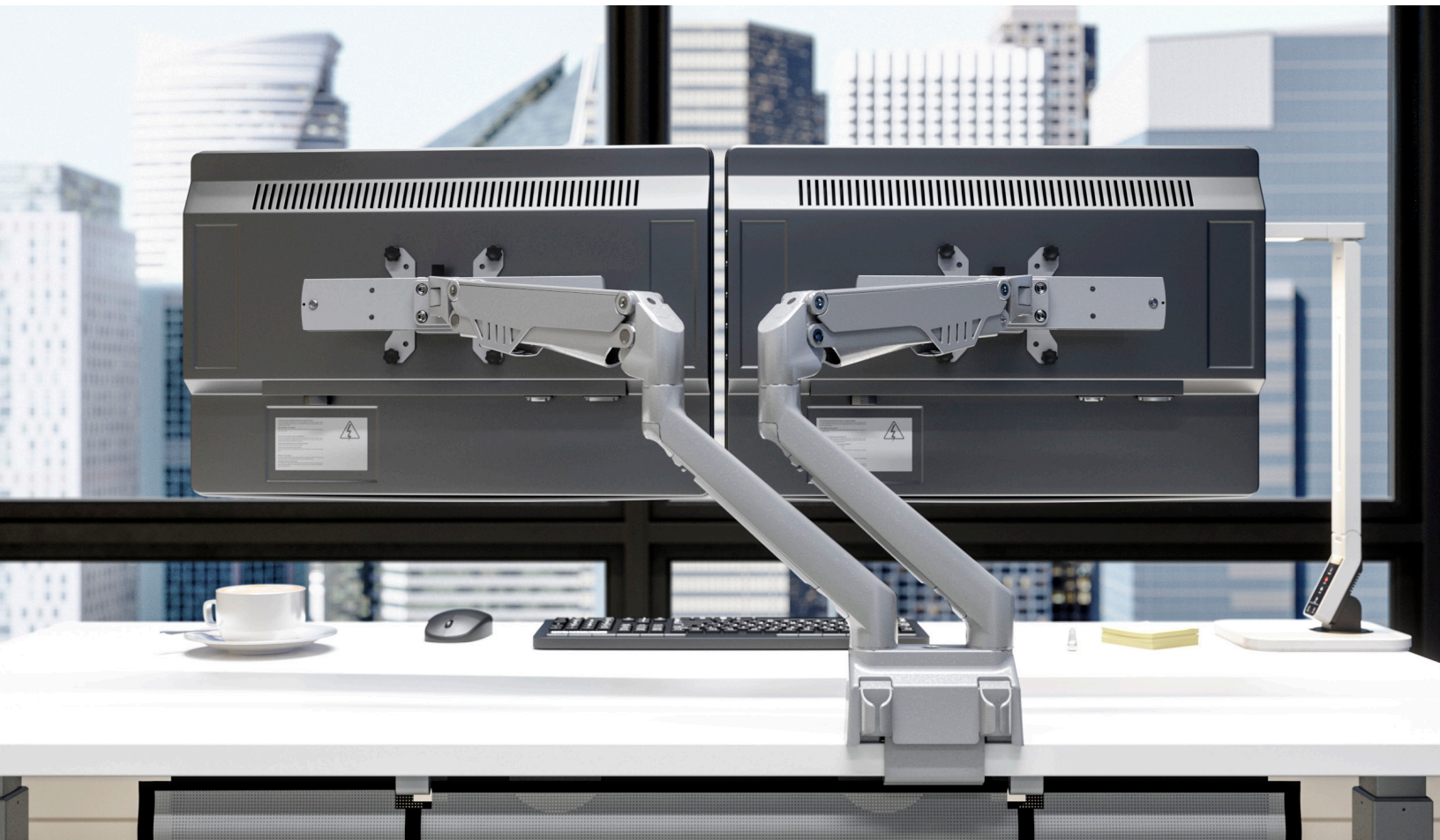
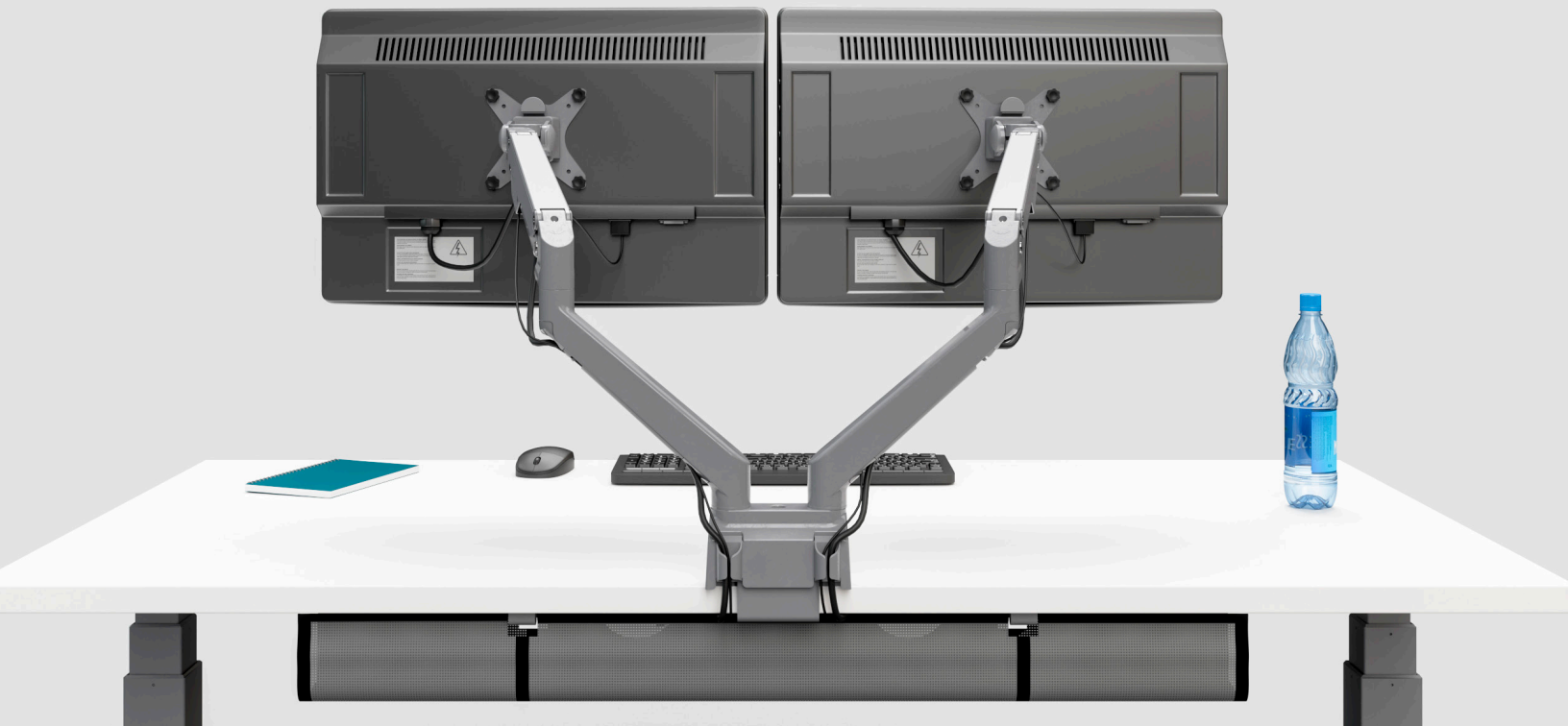


# ↑**up**Centric<sup>®</sup>

Single and dual monitor arms



ergoCentric<sup>®</sup>



## Full adjustability is essential for productive and healthy workspaces

ergoCentric's fully adjustable [upCentric® monitor arms](#) are designed for the modern office, enabling you to comfortably position your monitors horizontally and vertically to suit your needs.

Whether you are sitting or standing, upCentric monitor arms instantly enhance any workstation, improving overall workspace ergonomics.



Top access clamp for easy set up



Quick release VESA mount



upCentric monitor slider



180° lockout

# Optimal flexibility

---

## upCentric® single and dual monitor arms

- Easy installation with top clamping base
- Variable arm tension allows you to counterbalance monitor weight and height requirements
- Tilt, pan and rotate monitors from landscape to portrait
- Convenient 180° lockout prevents monitor arm(s) from swinging back/behind desk or into a wall, ideal in home office or cubicle setting
- Hide, protect and keep monitor cables tidy with the integrated cable management channel
- Effortless monitor installation and removal with the quick release VESA mount
- Integrate monitor arms with our laptop tray for greater convenience

---

## upCentric monitor slider

- Optimal flexibility for dual monitor positioning
- Increases acceptable monitor size ranges
- Tilt, pan and rotate monitors landscape to portrait

---

## Certification

- BIFMA X5.5

---

## Warranty

- 10 years



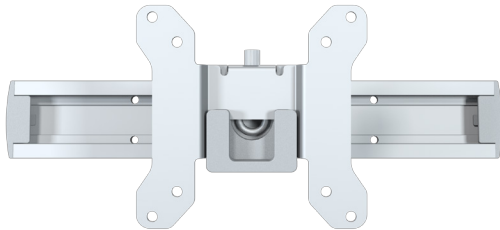


upCentric® dual monitor arm



upCentric single monitor arm

Specifications	Single monitor arm	Dual monitor arm
Monitor rotation		360°
Monitor tilt		175°
Monitor pan		200°
Base and elbow rotation		360°
Base rotation lockout		180°
Height range		12"
Depth range		18"
VESA quick release		75x75mm / 100x100mm
Weight load capacity		5-19.8 lbs per arm
Integrated cable management		Yes
Mounting type		Clamp or grommet mount
Desktop mounting range		0.67"-1.96" thickness
Material		Cast aluminum
Finish		Silver



upCentric monitor slider

Specifications	Monitor slider*
Weight load capacity	4.5-13.2 lbs per slider
VESA quick release	75x75mm / 100x100mm
Slider range	9"
Material	Cast aluminum
Finish	Silver

\* Available only for the upCentric dual monitor arm