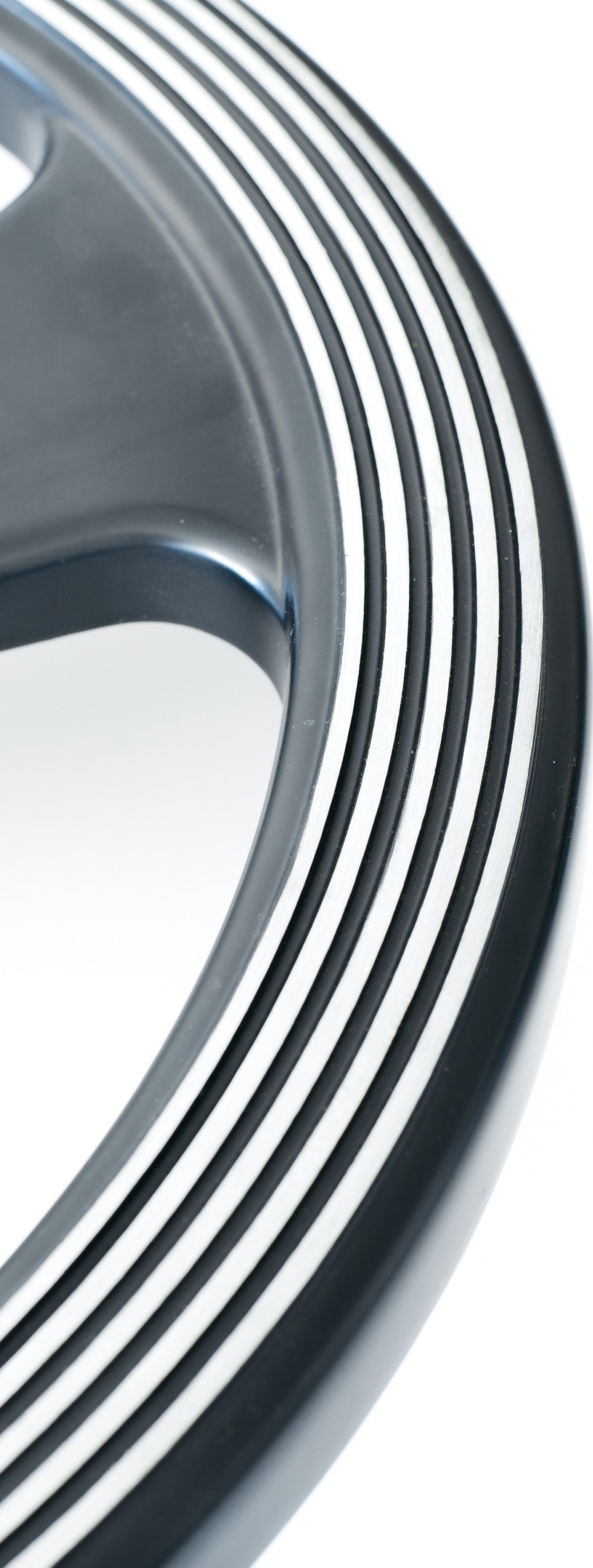


ergoCentric®
Foot Ring



The ergoCentric Foot Ring; reduce workplace fatigue.

Foot rings support the user's legs for various height requirements so that problems including fatigue, poor posture and decreased circulation can be avoided. A 1.75" wide ring base on the [ergoCentric Foot Ring](#) provides greater comfort and stability. To adjust the height of the foot ring simply add or remove the 2" spacers allowing you to bring the [ergoCentric Foot Ring](#) to the desired position for maximum durability and safety.



Features

- 20" outside diameter
- 1.75" wide ring base
- 4 spoke aluminum frame
- 50mm hub with nylon insert
- Available in black and light grey finishes
- Height adjustable:
 - 157 gas lift requires 1 spacer
 - 200 gas lift requires 2 spacers
 - 267 gas lift requires 3 spacers
- Please check individual chair specifications for the availability of the foot ring option

Warranty

10 Years