



Utility Shelf

A convenient, multi-purpose touch down surface.

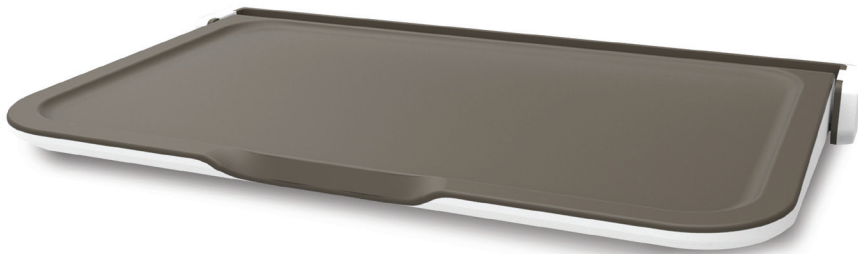
ergoCentric®

Charting and hand hygiene made easier with this multi-purpose unit. A convenient, clutter free solution.

The Utility Shelf™ was designed in collaboration with an acute care hospital to create a convenient solution for hospital staff to use as a multi-purpose touch down surface – ideal for hallways, patient rooms and laboratories.

The sleek, user friendly design provides staff with a convenient surface for charting or to place items temporarily and can be located next to hand sanitizing dispensers either in or outside patient rooms.

The shelf easily opens with your forearm or hand, to reveal a non-slip surface that fits most standard size food trays or clipboards and holds up to 120 lbs. When in the closed position, the patent pending, low profile ergoCentric Utility Shelf does not protrude past standard handrails posing no risk to patients and staff.



Features

- Hands free opening when your hands are full or contaminated.
- Optimal size - fits most standard food service trays or clipboards.
- Weighted to hold up to 120 lbs
- No sharp edges to catch skin or clothing.
- Designed with our patented damper system that stands up to continuous use.

Specifications

Dimensions

- Shelf depth - 15 ½"
- Shelf width - 22"
- Protrudes from wall when in:
closed position - 3 ½"
open position - 15 ¾"

Weight

- 10 ½ lbs

Warranty

5 years

- Can easily handle weights up to 120 lbs under normal usage, subject to wall structure and wall anchor capacity.

