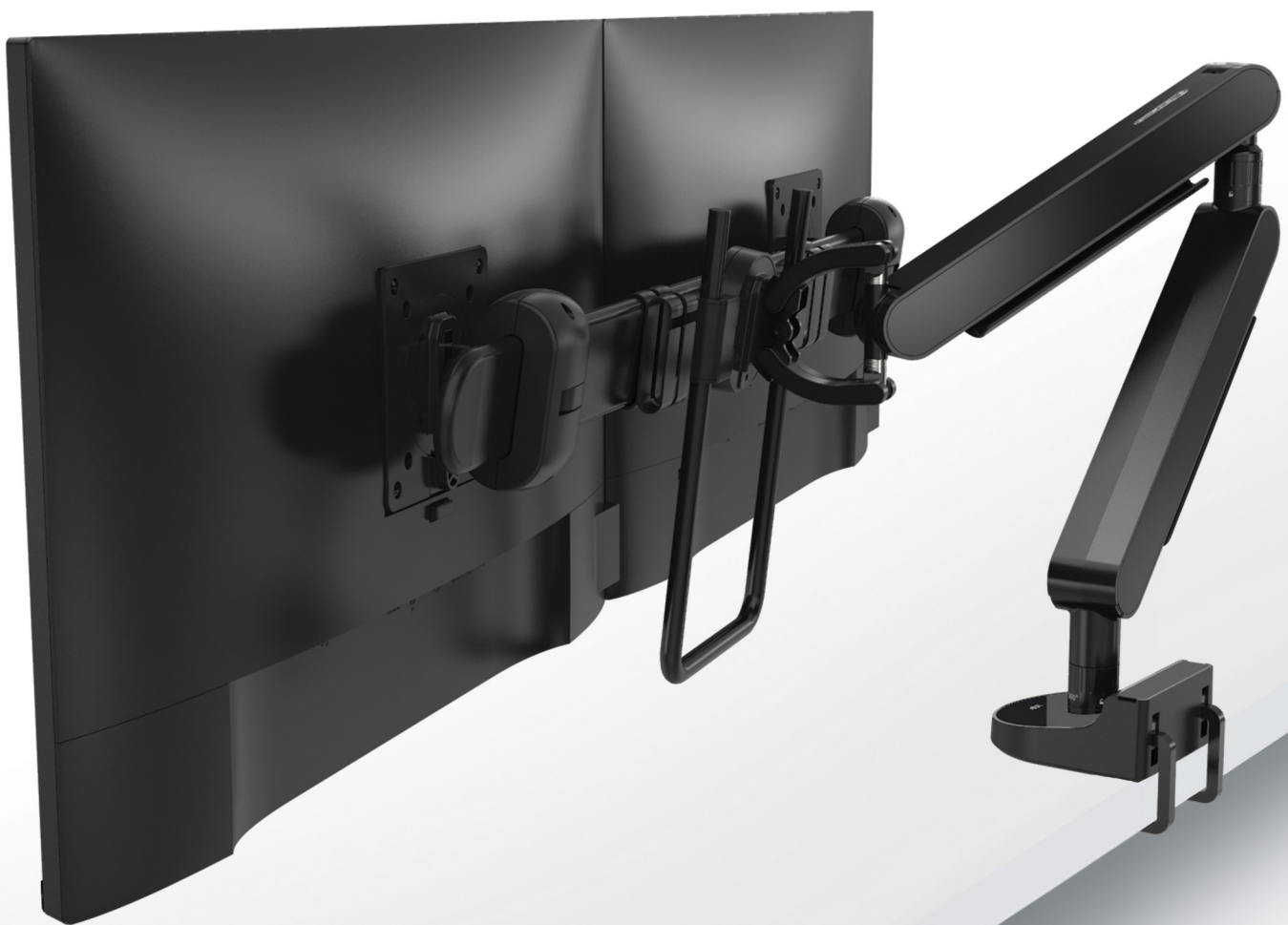


ZGX

Dual Monitor Arm Support

ergoCentric® + zgonic
The science of sitting®





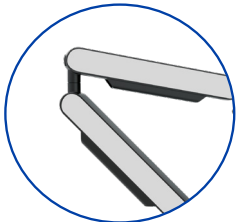
ZGX

[View Online](#)

[Contact Sales](#)



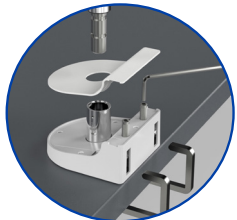
Patented Dial-Stop



Patented Infinite Panel Design



Integrated Cable Management



Top Down Clamp

Specifications

Monitor Size Supportable:	2 x 27" (Monitor size for reference only, Weight Supportable should be key factor)
Monitor Weight Supportable:	2 Monitors, 6.6 to 10lbs each
Arm Configuration	2 Monitors
Extended Arm Reach (from Desk Edge):	23.6"
Vertical Arm Adjustment Range:	11.4"
VESA Compliance:	75 x 75 mm and 100 x 100 mm
Arm Swivel Range (CW/CCW):	360° (With 180° lock-out feature to protect walls and screens)
Monitor Pivot Range:	360°
Monitor Tilt Range:	Forward 20° / Backward 35°
Quick Release for VESA Attachment:	For ease of monitor replacement
Quick Release for Mounting Attachment:	For ease of transition to crossbar mouting
Standard Clamp Thickness Range:	0.6" to 2" (Desk thickness)
Cable Management:	concealed within upper and lower arm
Mounts available:	Top down clamp mount, bolt through clamp mount, 2 piece clamp mount and wall mount
Installation tools placement:	Hidden in the top of post, suspended from top cap
Dual rotation dial-stop:	180° and 360° (no stop) at both center and rear joints for enhanced safety
Sustainability:	29% recycled and 99% recyclable content
Warranty Period:	Limited 10 years

