

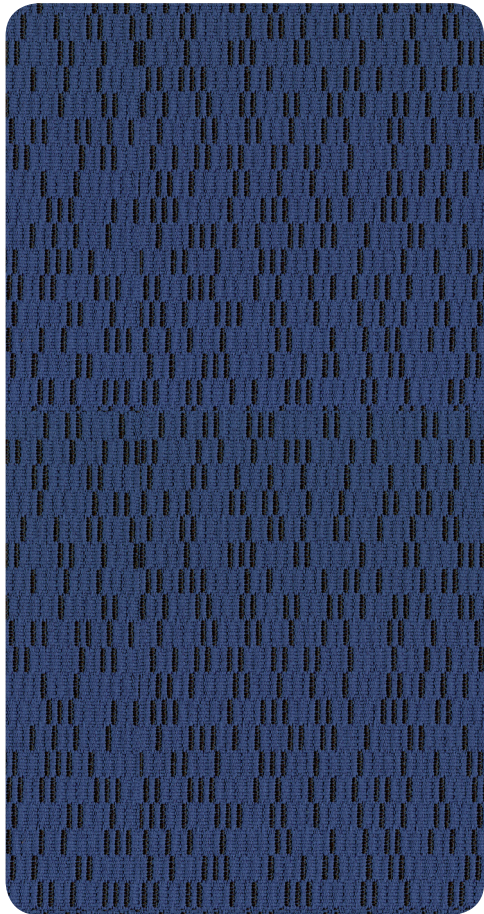
APPROUVÉ PAR

ergoCentric



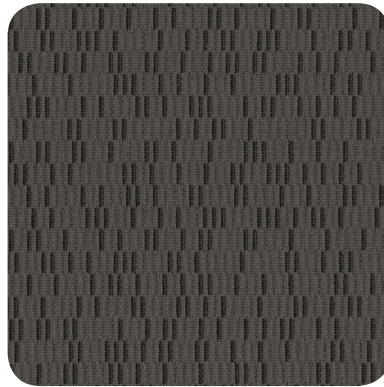
APPROVED | APROBADO

# PUNCH CARD



**NAVY**

1309



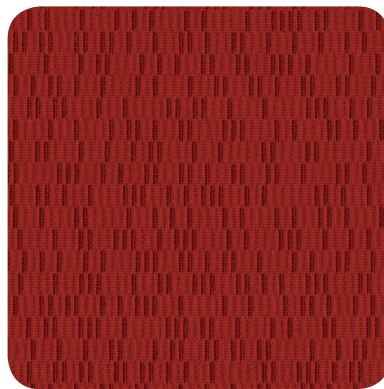
**CARBON**

1302



**BURGUNDY**

1311



**CRIMSON**

1307



**ABYSS**

1313




# PUNCH CARD

ergoCentric<sup>®</sup>


## SPECIFICATIONS

Main use	Seating Vertical surfaces
Repeat	Horizontal: 12.5" Vertical: 25"
Weaving	Jacquard
Content	78% polyester, 22% post consumer recycled polyester
Width	54" usable
Weight	11.1 ± 1 oz./lin. yd.

## PERFORMANCES

 Abrasion resistance	100,000 double rubs
 Pilling resistance	Class 4
 Colorfastness to light	40 hours Class 4
Colorfastness to crocking	Dry = Class 4 min. Wet = Class 3 min.
Breaking strength	Warp: 280 lbf. min. Fill: 230 lbf. min.
Seam slippage	Warp: 105 lbf. Fill: 60 lbf.

## FLAMMABILITY

NFPA 260-2003	Class 1
 State of CA. Tech. Bulletin 117: 2013 Section 1	Pass
UFAC	Class 1

## CLEANING

Standard Care Label W-5: Clean with water based cleaning agents, foam or pure, water free solvents. Vacuuming or light brushing is recommended to prevent dust and soil buildup.




## WARRANTY

10 year performance warranty on all ergoCentric Approved Fabrics.


## SPÉCIFICATIONS

Usages	Recouvrement
Répétition	25 po. vertical 12.5 po. horizontal
Tissage	Linguee
Composition	22% polyester recyclé post-consommation 78% polyester
Largeur	54 po min. utilisable
Poids	11.1 ± 1.0 onces/ verge linéaire

## PROPRIÉTÉS

 Résistance à l'abrasion	100,000 doubles frottements
 Résistance au peluchage	Classe 4
 Résistance à la lumière	40 heures classe 4
Résistance au dégoûment	Classe 4 min. sec Classe 3 min. humide
Résistance à la rupture	280 lbf. min. chaîne 230 lbf. min. trame
Glissement de la couture	105 lbf. chaîne 60 lbf. trame

## INFLAMMABILITÉ

NFPA 260-2003	Classe 1
 État de la Californie Technique 117: 2013 Section 1	Conforme
UFAC	Classe 1

## NETTOYAGE

Standard de nettoyage W-5: nettoyer avec des produits nettoyants à base d'eau, en mousse ou en liquide ou solvant sans eau. Il est recommandé d'utiliser l'aspirateur ou la brosse pour prévenir l'accumulation de poussière ou de salissures.




## GARANTIE

Garantie de performance de 10 ans sur tous les tissus approuvés par ergoCentric.


## ESPECIFICACIONES

Uso principal	Sillas Superficies verticales
Repetición	Horizontal: 12.5" Vertical: 25"
Tejido	Jacquard
Contenido	22% poliéster reciclado después del consumo, 78% poliéster reciclado antes del consumo
Ancho	54" utilizable
Peso	11.1 ± 1 oz./yd.

## PROPIEDADES

 Resistencia a la abrasión	100.000 frotados dobles
 Resistencia a la perforación	Clase 4
 Resistencia del color a la luz	40 horas clase 4
Resistencia del color a la cocción	Clase 4 min.- seco Clase 3 min.- húmedo
Resistencia a la rotura	Urdimbre: 280 lbf. min. Trama: 230 lbf. min.
Deslizamiento de la costura	Urdimbre: 105 lbf. Trama: 60 lbf.

## INFLAMABILIDAD

NFPA 260-2003	Clase 1
 Estado de California. Boletín técnico 117: 2013 Sección 1	Pasa
UFAC	Clase 1

## LIMPIEZA

Etiqueta de cuidado estándar W-5. Limpiar con productos de limpieza a base de agua, espuma o disolventes puros sin agua. Se recomienda aspirar o cepillar ligeramente para evitar la acumulación de polvo y tierra.

## GARANTÍA

10 años de garantía de rendimiento en todas las tapicerías aprobadas por ergoCentric.